



Izukyū Discovery Pass

Show your pass and enjoy various benefits!



1 Shops where you can buy souvenirs from Izu **Zushu KIYOTAYA** 豆州清田屋



- 📍 Zushu KIYOTAYA Izu-Kogen 1 min by walk from Izu-Kōgen sta. [IZ06]
- 📍 Zushu KIYOTAYA Shimoda 1 min by walk from Izukyū-Shimoda sta. [IZ16]

👉 **Discount**
10% discount on more than JPY 1,000 (tax included) shopping.



(Japanese) <https://zushu-kiyotaya.com/>

2 Restaurants where you can enjoy fresh local seafood **Seafood Restaurant Tokuzomaru** 網元料理 徳造丸



- 📍 Seafood Restaurant Tokuzomaru Shimoda 1 min by walk from Izukyū-Shimoda sta. [IZ16]
- 📍 Seafood Restaurant Tokuzomaru Honten 10 min by walk from Izu-Inatori sta. [IZ11]
- 📍 Seafood Restaurant Tokuzomaru Gyoan 7 min by taxi from Izu-Inatori sta. [IZ11]

👉 **Privilege**
1 non-alcoholic drink service when you take meal



(English) https://1930.bz/osyokuji_en/

3 Specially selected tuna and fresh fish, along with delicious sake **Sakanaya Dojo** さかなや道場



- 📍 Sakanaya Dojo Ito 1min by walk from Ito sta. [IZ01]
- 📍 Sakanaya Dojo Izukyū-Shimoda 1min by walk from Izukyū-Shimoda sta. [IZ16]

👉 **Discount** 10% discount



(Japanese) https://www.chimney.co.jp/eatery/brand.html?brand_code=sakana

4 A former ryokan showcasing traditional Japanese beauty **Tokaikan** 東海館



- 📍 Tokaikan 7 min by walk from Ito sta.[IZ01]

👉 **Admission Discount**
Adult : JPY 50 discount
Child(7~15years old) : JPY 50 discount



(Japanese) <http://itospa.com/feature/tokaikan/>

5 A place where you can become one with a deep-blue world of sea and sky **Komuroyama Lift** 小室山リフト



- 📍 Komuroyama Lift 30 min by walk from Kawana sta. [IZ03]

👉 **Discount** Ice-cream JPY 50 discount



(Japanese) <https://www.tokaibus.jp/business/lift.html>

6 An activity zoo where you can enjoy up-close animal encounters **Izu Shaboten Zoo** 伊豆シャボテン動物公園



- 📍 Izu Shaboten Zoo 20 min by bus from Izu-Kogen sta. [IZ06]

👉 **Admission Discount**
Adult : Weekdays JPY 100 discount Weekends/Holidays JPY 200 discount
7~12years old/4~6years old :
Weekdays JPY 50 discount Weekend/Holidays JPY 150 discount



(Japanese) <https://izushaboten.com/>

7 A leisure park where both adults and children can play actively **Izu Granpal Amusement Park** 伊豆ぐらんぱる公園



- 📍 Izu Granpal Amusement Park 20 min by bus from Izu-Kogen sta. [IZ06]

👉 **Admission Discount**
Adult : Weekdays JPY 100 discount Weekends/Holidays JPY 200 discount
7~12years old/4~6years old :
Weekdays JPY 50 discount Weekend/Holidays JPY 150 discount



(Japanese) <https://www.granpal.com/>

8 A museum featuring seasonal flowers and 120-year-old Tiffany lamps **New York Lamp Museum & Flower Garden** ニューヨークランプミュージアム&フラワーガーデン



- 📍 New York Lamp Museum & Flower Garden 15 min by bus from Izu-Kogen sta. [IZ06]

👉 **Privilege** Souvenir present



(English) <https://nylfbmuseum.com/en/>



Izukyū Discovery Pass

Show your pass and enjoy various benefits!



9 A museum where you can see treasured teddy bears, including Guinness record-worthy collections
Izu Teddy Bear Museum 伊豆テディベア・ミュージアム



Izu Teddy Bear Museum
 9 min by walk from Izu-Kogen sta. [IZO6]

Admission Discount
 Adult/13~18years old/7~12 years old : JPY 100 discount
 (Japanese) <http://www.teddynet.co.jp/izu/>



10 A place where you can see rare crocodiles, tropical plants, and tropical fruits, including endangered species
Atagawa Tropical & Alligator Garden 熱川バナナワニ園



Atagawa Tropical & Alligator Garden
 1 min by walk from Izu-Atagawa sta. [IZO9]

Admission Discount
 Adult : JPY 200 discount 4~12years old : JPY 100 discount
 (English) <http://bananawani.jp/english/>



11 A leisure park where you can see white tigers, lions, and other wild animals
Izu Animal Kingdom 伊豆アニマルキングダム



Izu Animal Kingdom 10 min by bus from Izu-Inatori sta. [IZ11]

Admission Discount
 Adult : JPY 100 discount 4~12years old : JPY 50 discount

(English) <https://izu-animal-kingdom.com/en/>



12 A meeting of Eastern and Western beauty
Uehara Museum of Art 上原美術館



Uehara Museum of Art **Closed from September 2026 to October 2027**
 20 min by bus from Izukyū-Shimoda sta. [IZ16] and 15 min by walk from "Aitama" bus stop

Admission Discount
 Adult : JPY 1,000→JPY 900 Student : JPY 500→JPY 450
 High school students and under receive free admission.
 (Japanese) <http://www.uehara-museum.or.jp/>



13 An aquarium where you can get closer to dolphins than anywhere else
Shimoda Floating Aquarium 下田海中水族館



Shimoda Floating Aquarium 7 min by bus from Izukyū-Shimoda sta. [IZ16]

Admission Discount
 Adult : JPY 200 discount 4~12years old : JPY 100 discount

(Japanese) <https://shimoda-aquarium.com/>



14 Enjoy the scenery of Shimoda Port aboard a Black Ship and the natural beauty of Irozaki viewed from the sea
Izu Cruise [Shimoda Bay Cruise / Irozaki Cruise] 伊豆クルーズ

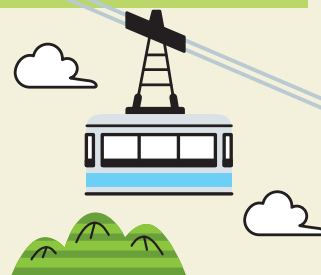


Izu Cruise [Shimoda Bay Cruise] 15 min by walk from Izukyū-Shimoda sta. [IZ16]
Izu Cruise [Irozaki Cruise]
 40 min by bus from Izukyū-Shimoda sta. [IZ16]
 and 7 min by walk from "Irozakikoguchi" bus stop

Discount 10% discount
 (English) <https://izu-cruise.com/en/>



You can ride the Shimoda Ropeway!



Shimoda Ropeway
2 min. by walk from
Izuky-Shimoda Sta. [IZ16]

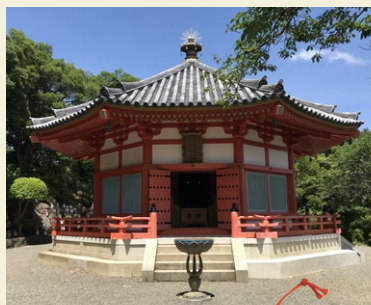
Special Offers
1 round trip for free

How to use

Please show your pass ticket at the ticket counter. Items other than hand luggage may be stored in lockers for a fee. Depending on weather conditions on the day, ropeway operations may be suspended at short notice even if service is running as usual.

(Japanese)

<https://www.ropeway.co.jp/>



It takes about 3 minutes to reach the summit by ropeway. The panoramic view over Shimoda Bay is very popular. The summit also features Aizendo, known as a romantic power spot, and a dog run.



SPOT



THE ROYAL HOUSE

ザ ロイヤル ハウス

Enjoy an elegant moment of your journey in a beautifully designed space adorned with traditional craftsmanship and scenic views.

¥ Food JPY 1,200~
Dessert JPY 850~
Drink JPY 600~



Safety precaution

- Effective period is within one month from date of use.
- Details and up-to-date operation status, please check the website
- Refunds are not available.



Shimoda Ropeway Campaign

present



Shimoda Ropeway Giveaway Campaign

How to Join 1 Purchase the Izuky Discovery Pass and enjoy Izu!

2 Post a photo of the Shimoda Ropeway or your Izuky Discovery Pass on social media.

3 Show your post at the Shimoda Ropeway ticket counter.

4 Get a gift! 🎁

